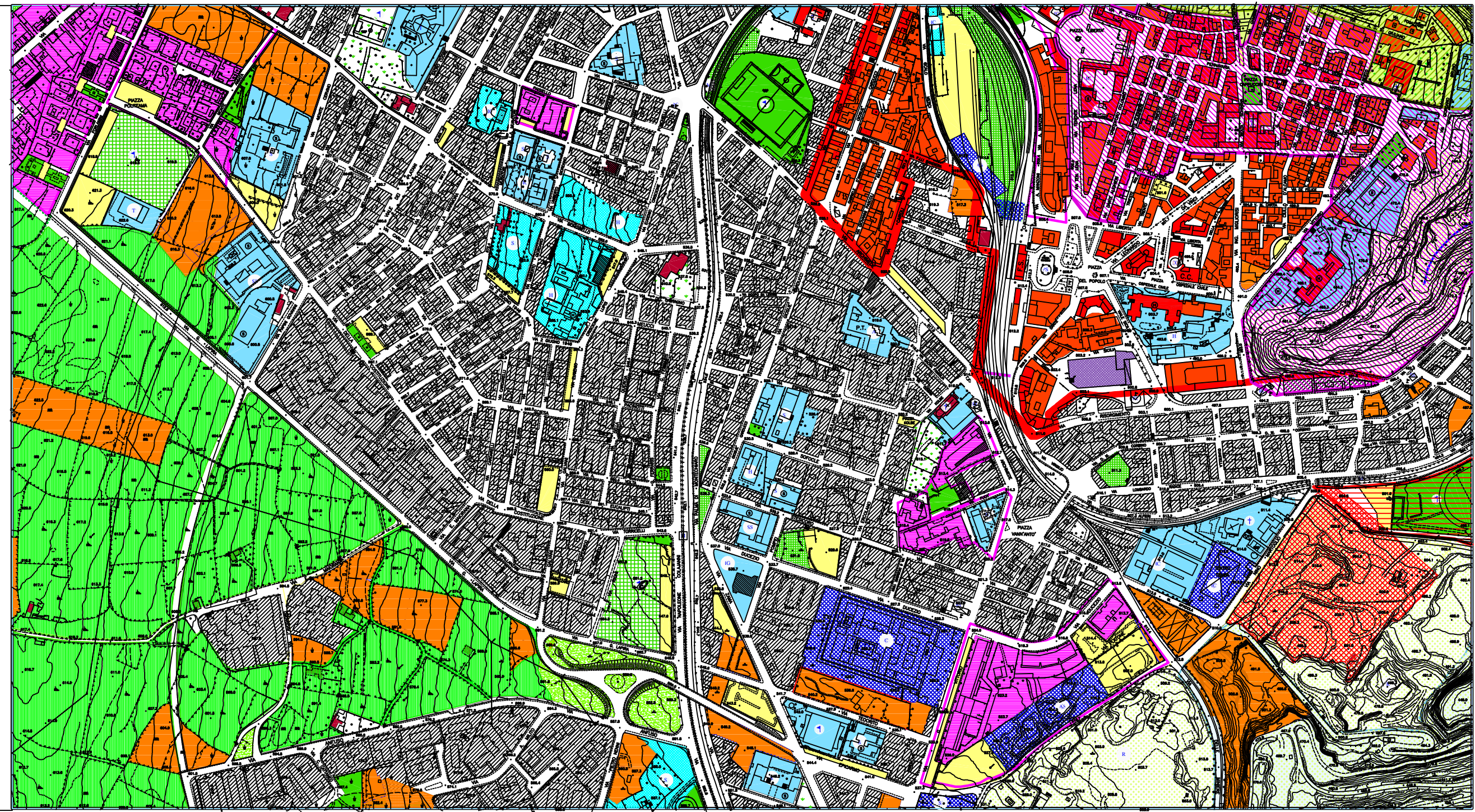


### LEGENDA

<ul style="list-style-type: none"> <li><span style="display: inline-block; width: 15px; height: 10px; background-color: red; border: 1px solid black; margin-right: 5px;"></span> A - Edifici con caratteristiche storico-tipologiche costruiti prima del 1940</li> <li><span style="display: inline-block; width: 15px; height: 10px; background-color: orange; border: 1px solid black; margin-right: 5px;"></span> A2 - A3 Edifici storici (ville o masserie - case rurali) esterni al centro storico</li> <li><span style="display: inline-block; width: 15px; height: 10px; background-color: yellow; border: 1px solid black; margin-right: 5px;"></span> B - Tessuto urbano saturo interno al centro storico</li> <li><span style="display: inline-block; width: 15px; height: 10px; background-color: lightblue; border: 1px solid black; margin-right: 5px;"></span> B1 - zone B sature</li> <li><span style="display: inline-block; width: 15px; height: 10px; background-color: lightgreen; border: 1px solid black; margin-right: 5px;"></span> B1 - zone B di completamento</li> <li><span style="display: inline-block; width: 15px; height: 10px; background-color: lightyellow; border: 1px solid black; margin-right: 5px;"></span> B3 - ristrutturazione urbana edilizia</li> <li><span style="display: inline-block; width: 15px; height: 10px; background-color: lightcyan; border: 1px solid black; margin-right: 5px;"></span> Agricolo produttivo con muri a secco (art. 48 e 61 N.T.A.)</li> <li><span style="display: inline-block; width: 15px; height: 10px; background-color: lightblue; border: 1px solid black; margin-right: 5px;"></span> Servizi esistenti</li> <li><span style="display: inline-block; width: 15px; height: 10px; background-color: cyan; border: 1px solid black; margin-right: 5px;"></span> Servizi in progetto</li> <li><span style="display: inline-block; width: 15px; height: 10px; background-color: blue; border: 1px solid black; margin-right: 5px;"></span> Attrezzature pubbliche di interesse generale (ambito perequativo art. 61 N.T.A.)</li> <li><span style="display: inline-block; width: 15px; height: 10px; background-color: green; border: 1px solid black; margin-right: 5px;"></span> Verde pubblico esistente</li> <li><span style="display: inline-block; width: 15px; height: 10px; background-color: lightgreen; border: 1px solid black; margin-right: 5px;"></span> Verde pubblico di progetto</li> <li><span style="display: inline-block; width: 15px; height: 10px; background-color: yellow; border: 1px solid black; margin-right: 5px;"></span> Verde sportivo di progetto</li> <li><span style="display: inline-block; width: 15px; height: 10px; background-color: lightyellow; border: 1px solid black; margin-right: 5px;"></span> Area per sport campestri (art. 56 e 61 NTA)</li> <li><span style="display: inline-block; width: 15px; height: 10px; background-color: lightgreen; border: 1px solid black; margin-right: 5px;"></span> Verde di pertinenza</li> <li><span style="display: inline-block; width: 15px; height: 10px; background-color: green; border: 1px solid black; margin-right: 5px;"></span> Giardini privati</li> <li><span style="display: inline-block; width: 15px; height: 10px; background-color: lightgreen; border: 1px solid black; margin-right: 5px;"></span> Verde di pertinenza stradale</li> <li><span style="display: inline-block; width: 15px; height: 10px; background-color: purple; border: 1px solid black; margin-right: 5px;"></span> D - Turistico ricettivo esistente</li> <li><span style="display: inline-block; width: 15px; height: 10px; background-color: yellow; border: 1px solid black; margin-right: 5px;"></span> Parcheggi</li> <li><span style="display: inline-block; width: 15px; height: 10px; background-color: orange; border: 1px solid black; margin-right: 5px;"></span> Cn - Residenziale misto e spazi pubblici</li> <li><span style="display: inline-block; width: 15px; height: 10px; background-color: purple; border: 1px solid black; margin-right: 5px;"></span> D - Commerciale terziario misto e spazi pubblici</li> <li><span style="display: inline-block; width: 15px; height: 10px; background-color: lightgreen; border: 1px solid black; margin-right: 5px;"></span> Ambito perequativo "Parco agricolo" - art. 61 n.t.a.</li> <li><span style="display: inline-block; width: 15px; height: 10px; background-color: lightgreen; border: 1px solid black; margin-right: 5px;"></span> Riqualificazione urbanistica in zona di recupero (art. 65 N.T.A.)</li> <li><span style="display: inline-block; width: 15px; height: 10px; background-color: purple; border: 1px solid black; margin-right: 5px;"></span> D - Produttivo esistente</li> <li><span style="display: inline-block; width: 15px; height: 10px; background-color: lightpurple; border: 1px solid black; margin-right: 5px;"></span> Dp - Produttivo in progetto</li> <li><span style="display: inline-block; width: 15px; height: 10px; background-color: lightblue; border: 1px solid black; margin-right: 5px;"></span> D - Ricettivo misto e spazi pubblici</li> <li><span style="display: inline-block; width: 15px; height: 10px; background-color: lightblue; border: 1px solid black; margin-right: 5px;"></span> Turistico ricettivo di progetto</li> <li><span style="display: inline-block; width: 15px; height: 10px; background-color: lightgreen; border: 1px solid black; margin-right: 5px;"></span> Recupero ambientale contesti estrattivi minerali esistenti</li> <li><span style="display: inline-block; width: 15px; height: 10px; background-color: lightgreen; border: 1px solid black; margin-right: 5px;"></span> Lottizzazioni convenzionate</li> <li><span style="display: inline-block; width: 15px; height: 10px; background-color: lightgreen; border: 1px solid black; margin-right: 5px;"></span> Riqualificazione urbanistica lotti intrecciati in zone di recupero (art. 66 N.T.A.)</li> <li><span style="display: inline-block; width: 15px; height: 10px; background-color: orange; border: 1px solid black; margin-right: 5px;"></span> Attività edilizia</li> <li><span style="display: inline-block; width: 15px; height: 10px; background-color: yellow; border: 1px solid black; margin-right: 5px;"></span> Programma costruttivo</li> <li><span style="display: inline-block; width: 15px; height: 10px; background-color: orange; border: 1px solid black; margin-right: 5px;"></span> Perimetro programmi costruttivi</li> <li><span style="display: inline-block; width: 15px; height: 10px; background-color: blue; border: 1px solid black; margin-right: 5px;"></span> Perimetro P.E.</li> <li><span style="display: inline-block; width: 15px; height: 10px; background-color: red; border: 1px solid black; margin-right: 5px;"></span> Perimetro centro storico</li> </ul>	<p><b>VINCOLI</b></p> <ul style="list-style-type: none"> <li><span style="display: inline-block; width: 15px; height: 10px; background-color: lightblue; border: 1px solid black; margin-right: 5px;"></span> Paesistico Iriminio</li> <li><span style="display: inline-block; width: 15px; height: 10px; background-color: lightyellow; border: 1px solid black; margin-right: 5px;"></span> Interesse archeologico</li> <li><span style="display: inline-block; width: 15px; height: 10px; background-color: lightblue; border: 1px solid black; margin-right: 5px;"></span> Indedificabilità</li> <li><span style="display: inline-block; width: 15px; height: 10px; background-color: lightblue; border: 1px solid black; margin-right: 5px;"></span> Idrogeologico</li> <li><span style="display: inline-block; width: 15px; height: 10px; background-color: lightgreen; border: 1px solid black; margin-right: 5px;"></span> Forestale</li> <li><span style="display: inline-block; width: 15px; height: 10px; background-color: lightgreen; border: 1px solid black; margin-right: 5px;"></span> Buffer forestale</li> <li><span style="display: inline-block; width: 15px; height: 10px; background-color: lightgreen; border: 1px solid black; margin-right: 5px;"></span> Ex Galasso</li> <li><span style="display: inline-block; width: 15px; height: 10px; background-color: lightblue; border: 1px solid black; margin-right: 5px;"></span> Centro città</li> <li><span style="display: inline-block; width: 15px; height: 10px; background-color: lightblue; border: 1px solid black; margin-right: 5px;"></span> Archeologico</li> <li><span style="display: inline-block; width: 15px; height: 10px; background-color: lightgreen; border: 1px solid black; margin-right: 5px;"></span> Tutela Vallata Santa Domenica</li> <li><span style="display: inline-block; width: 15px; height: 10px; background-color: lightgreen; border: 1px solid black; margin-right: 5px;"></span> Fascia di rispetto Casa Monaco Arezzo</li> <li><span style="display: inline-block; width: 15px; height: 10px; background-color: lightgreen; border: 1px solid black; margin-right: 5px;"></span> Fascia di rispetto cimiteriale</li> <li><span style="display: inline-block; width: 15px; height: 10px; background-color: lightgreen; border: 1px solid black; margin-right: 5px;"></span> Fascia di rispetto costa L.R. 78/76</li> <li><span style="display: inline-block; width: 15px; height: 10px; background-color: lightgreen; border: 1px solid black; margin-right: 5px;"></span> Indedificabilità 10mt dagli argini</li> <li><span style="display: inline-block; width: 15px; height: 10px; background-color: lightgreen; border: 1px solid black; margin-right: 5px;"></span> Paesistico P. Braccetto D.P.R. 2067/67</li> <li><span style="display: inline-block; width: 15px; height: 10px; background-color: lightgreen; border: 1px solid black; margin-right: 5px;"></span> Indedificabilità assoluta - Emend. n.37</li> <li><span style="display: inline-block; width: 15px; height: 10px; background-color: lightgreen; border: 1px solid black; margin-right: 5px;"></span> Riserva - Zona "A"</li> <li><span style="display: inline-block; width: 15px; height: 10px; background-color: lightgreen; border: 1px solid black; margin-right: 5px;"></span> Riserva - Zona "B"</li> <li><span style="display: inline-block; width: 15px; height: 10px; background-color: lightgreen; border: 1px solid black; margin-right: 5px;"></span> Canale infrastrutturale previsto dal P.T.P.</li> </ul>	<ul style="list-style-type: none"> <li><span style="display: inline-block; width: 15px; height: 10px; border: 1px solid black; margin-right: 5px;"></span> Eliporto</li> <li><span style="display: inline-block; width: 15px; height: 10px; border: 1px solid black; margin-right: 5px;"></span> Sovrappasso</li> <li><span style="display: inline-block; width: 15px; height: 10px; border: 1px solid black; margin-right: 5px;"></span> Strade in progetto</li> <li><span style="display: inline-block; width: 15px; height: 10px; border: 1px solid black; margin-right: 5px;"></span> Tracciato mezzo simmetrico</li> <li><span style="display: inline-block; width: 15px; height: 10px; border: 1px solid black; margin-right: 5px;"></span> Percorsi pedonali</li> <li><span style="display: inline-block; width: 15px; height: 10px; border: 1px solid black; margin-right: 5px;"></span> Perimetro P.P.R.U.</li> <li><span style="display: inline-block; width: 15px; height: 10px; border: 1px solid black; margin-right: 5px;"></span> Sollevamento rifiuti (P.A.R.F.)</li> <li><span style="display: inline-block; width: 15px; height: 10px; border: 1px solid black; margin-right: 5px;"></span> Eliminazione riempimento Via Mariniana Schinà</li> </ul> <ul style="list-style-type: none"> <li><span style="display: inline-block; width: 15px; height: 10px; border: 1px solid black; border-radius: 50%; margin-right: 5px;"></span> Attrezzature scolastiche</li> <li><span style="display: inline-block; width: 15px; height: 10px; border: 1px solid black; border-radius: 50%; margin-right: 5px;"></span> Attrezzature religiose</li> <li><span style="display: inline-block; width: 15px; height: 10px; border: 1px solid black; border-radius: 50%; margin-right: 5px;"></span> Attrezzature sanitarie</li> <li><span style="display: inline-block; width: 15px; height: 10px; border: 1px solid black; border-radius: 50%; margin-right: 5px;"></span> Attrezzature sportive</li> <li><span style="display: inline-block; width: 15px; height: 10px; border: 1px solid black; border-radius: 50%; margin-right: 5px;"></span> Impianti tecnologici</li> <li><span style="display: inline-block; width: 15px; height: 10px; border: 1px solid black; border-radius: 50%; margin-right: 5px;"></span> Quattrozona</li> <li><span style="display: inline-block; width: 15px; height: 10px; border: 1px solid black; border-radius: 50%; margin-right: 5px;"></span> Mercato</li> <li><span style="display: inline-block; width: 15px; height: 10px; border: 1px solid black; border-radius: 50%; margin-right: 5px;"></span> Attività amministrative</li> <li><span style="display: inline-block; width: 15px; height: 10px; border: 1px solid black; border-radius: 50%; margin-right: 5px;"></span> Carcere</li> <li><span style="display: inline-block; width: 15px; height: 10px; border: 1px solid black; border-radius: 50%; margin-right: 5px;"></span> Università</li> <li><span style="display: inline-block; width: 15px; height: 10px; border: 1px solid black; border-radius: 50%; margin-right: 5px;"></span> Attività giudiziaria</li> <li><span style="display: inline-block; width: 15px; height: 10px; border: 1px solid black; border-radius: 50%; margin-right: 5px;"></span> Istituto Religioso</li> <li><span style="display: inline-block; width: 15px; height: 10px; border: 1px solid black; border-radius: 50%; margin-right: 5px;"></span> Protezione Civile</li> <li><span style="display: inline-block; width: 15px; height: 10px; border: 1px solid black; border-radius: 50%; margin-right: 5px;"></span> Scuole superiori</li> <li><span style="display: inline-block; width: 15px; height: 10px; border: 1px solid black; border-radius: 50%; margin-right: 5px;"></span> Scalo merci</li> <li><span style="display: inline-block; width: 15px; height: 10px; border: 1px solid black; border-radius: 50%; margin-right: 5px;"></span> Vigili del fuoco</li> <li><span style="display: inline-block; width: 15px; height: 10px; border: 1px solid black; border-radius: 50%; margin-right: 5px;"></span> Attrezzature di interesse comune</li> <li><span style="display: inline-block; width: 15px; height: 10px; border: 1px solid black; border-radius: 50%; margin-right: 5px;"></span> Rifornimento carburanti</li> <li><span style="display: inline-block; width: 15px; height: 10px; border: 1px solid black; border-radius: 50%; margin-right: 5px;"></span> Autostazione</li> <li><span style="display: inline-block; width: 15px; height: 10px; border: 1px solid black; border-radius: 50%; margin-right: 5px;"></span> Parcheggio sotterraneo</li> <li><span style="display: inline-block; width: 15px; height: 10px; border: 1px solid black; border-radius: 50%; margin-right: 5px;"></span> Carabinieri</li> <li><span style="display: inline-block; width: 15px; height: 10px; border: 1px solid black; border-radius: 50%; margin-right: 5px;"></span> Guardia di finanza</li> <li><span style="display: inline-block; width: 15px; height: 10px; border: 1px solid black; border-radius: 50%; margin-right: 5px;"></span> Interesse generale</li> <li><span style="display: inline-block; width: 15px; height: 10px; border: 1px solid black; border-radius: 50%; margin-right: 5px;"></span> Stazione ferroviaria urbana</li> </ul>
--	--	---



## PROGETTO ELABORATI "C"

# 5

ELABORATI DI P.R.G. ADEGUATI AL PUNTO 3  
DELLA DELIBERA C/A N° 28 DEL 29.05.03

**PRGC RAGUSA**  
SCALA 1:2000  
MAGGIO 2003

ELABORAZIONE: OFFICINA DI PIANO  
COORDINATORE: ANTONIO BRUNO  
AUTORE: ANTONIO BRUNO  
AUTORE: ANTONIO BRUNO  
AUTORE: ANTONIO BRUNO  
AUTORE: ANTONIO BRUNO

COLLABORAZIONE:  
AUTORE: ANTONIO BRUNO  
AUTORE: ANTONIO BRUNO  
AUTORE: ANTONIO BRUNO  
AUTORE: ANTONIO BRUNO  
AUTORE: ANTONIO BRUNO

REDAZIONE: ANTONIO BRUNO  
AUTORE: ANTONIO BRUNO  
AUTORE: ANTONIO BRUNO  
AUTORE: ANTONIO BRUNO  
AUTORE: ANTONIO BRUNO